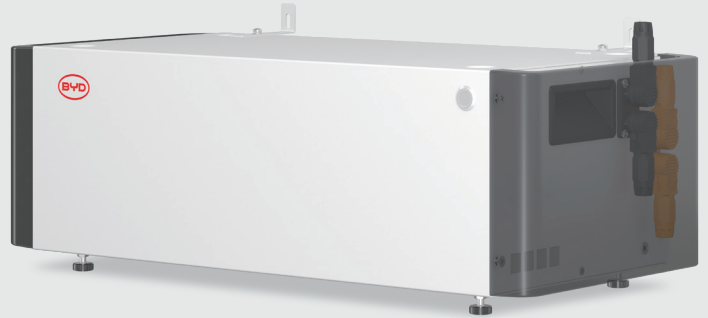


# BATTERY-BOX LV5.0+



## KEY FEATURES



### Safety

LFP cells developed in-house  
Proven in millions of EVs



### Reliability

LFP expertise since 2002  
1M+ systems in 100+ countries



### High performance

Max. 1C-rate charge & discharge  
100%DOD



### Flexibility

Maximum capacity of 163.84kWh  
Compatible with BYD and major  
brand inverters



### Ultra Experience

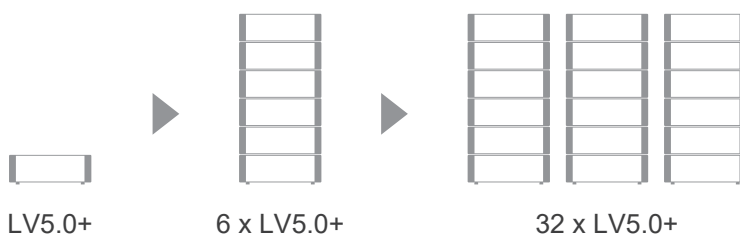
Easy Installation with Plug-Play power cable  
One-click auto-configuration  
with compatible inverters



### Intelligent Management

24/7 online monitoring and analysis  
Remote diagnosis and OTA updates  
Real-time data & energy flow on BYD Energy APP

## BATTERY-BOX LV5.0+



Maximum capacity of

# 163.84 kWh

## TECHNICAL PARAMETERS LV5.0+



### PERFORMANCE

#### LV5.0+

Usable Energy <sup>[1]</sup>	5.12 kWh
Max. Charge and Discharge Current <sup>[2] [3]</sup>	100 A
Peak Charge and Discharge Current <sup>[3]</sup>	200 A, 10 s
Dimensions(H/W/D)	195 x 625 x 285 mm
Weight	45 kg
Nominal Voltage	51.2 V
Operating Voltage	40 - 58.4 V
Charge Cut-Off Voltage	58.4 V
Discharge Cut-Off Voltage	40 V
Scalability	Max. 32 in Parallel (163.84 kWh)
Installation Mode	Floor installation
Communication	CAN / RS485
Round-trip Efficiency	≥ 95%
Applications	On Grid / On Grid + Backup / Off Grid
Operating Temperature <sup>[4]</sup>	Charge 0~55°C & Discharge -20~55°C
IP Class	IP20
Storage Humidity	5%~95%
Altitude	< 4000 m
Warranty	10 years
Certification	CE / IEC62619 / UN38.3
Accessories (Optional)	BYD Smart WIFI/LAN module
Compatible Inverter	      

[1] DC Usable Energy, Test conditions: 100% DOD, 0.2C charge & discharge at + 25°C. System Usable Energy may vary with different inverter brands.

[2] Charge & discharge current at +25°C.

[3] The current varies with different compatible inverters.

[4] Charge derating will occur between 0°C and +5°.

### NOTE

A: The initial capacity of the Battery Module is 5.12kWh.

B: The actual capacity and power of the Battery Module can be influenced by various conditions, including temperature, transportation, storage, and State of Health (SOH).